

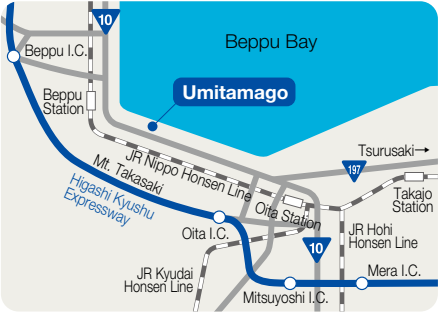
Umitamago Admission Fees / Operation Time

■ Hours of Operation 9:00 AM - 5:00 PM

	Adult (High school and above)	School Boys/Girls (Elementary and junior high school)	Infant (4 years and above)
Normal admission	¥3,000	¥1,500	¥1,000
Group admission (20 or more)	¥2,700	¥1,300	¥850

*Prices include consumption tax.

Transportation Access



☐ From Oita Airport
Oita Kotsu Bus bound for Oita Station (Express bus)
「Oita Kuko」→「Beppu Kitahama」→「Takasakiyama Shizen Dobutsuen Mae」
*Transfer to regular bus at 「Beppu Kitahama」 (About 50 min.)

☐ From Beppu Kankoko Port
Oita Kotsu Bus bound for Oita Station
「Minamisuga Iriguchi」→「Takasakiyama Shizen Dobutsuen Mae」
(About 15 min.)

☐ From Nishi Oitako Port
Oita Kotsu Bus bound for Beppu / Kunisaki
「Nishi Oita」→「Takasakiyama Shizen Dobutsuen Mae」 (About 10 min.)

☐ From JR Beppu Station
Oita Kotsu Bus bound for Oita Eki 「Beppu Eki Mae」→
「Takasakiyama Shizen Dobutsuen Mae」 (About 15 min.)

☐ From JR Oita Station
Oita Kotsu Bus bound for Beppu / Kunisaki「Oita Eki Mae」→
「Takasakiyama Shizen Dobutsuen Mae」 (About 25 min.)

ATTENTION: Umitamago Aquarium customers

- We do not make missing children announcements or page people in the aquarium.
- Smoking is prohibited on the aquarium premises.
- Please refrain from eating or drinking outside of designated areas.
- The aquarium management shall not be held responsible for any theft or loss of personal belongings.
- Pets are not allowed inside the aquarium.
- Reentry is only permitted on the day of the visit.

Please refrain from the following as they may cause a nuisance to other customers.

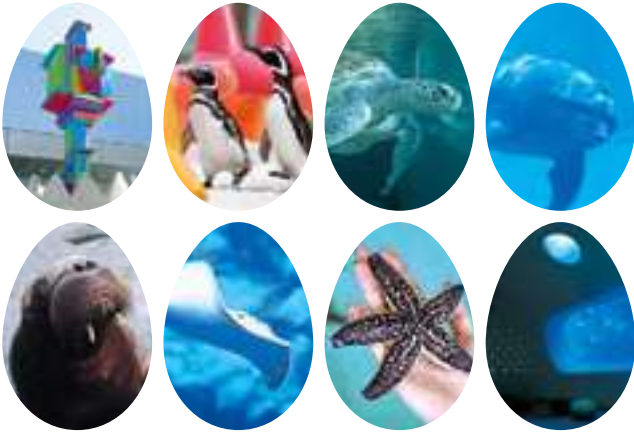
- Bring in hazardous items.
- Enter NO ENTRY areas.
- Damage, destroy, or deface exhibits and fixtures.
- Obstruct other customers from viewing or members of staff from performing their work duties.
- All other behaviors deemed by members of staff to be disturbing the peace or dangerous.
- Live streaming is strictly prohibited.

・We reserve the right to expel guests who do not abide by our rules.



3078-22, Kanzaki, Oita 870-0802
Tel : (097)-534-1010 Fax : (097)-534-1013
<https://www.uitamago.jp>

Updated on April 2025.



An aquarium where you can befriend animals



Shops & Restaurants

1F Gift Shop (Souvenirs)

The gift shop offers a variety of gift items, including Umitamago's original goods and aquarium merchandise.

The shop is open during 'Umitamago' opening hours.



2F Gacha Corner

The capsule toy corner is exclusive to Umitamago customers. You can enjoy it before and after performances, regardless of age.

The shop is open during 'Umitamago' opening hours.



1F Cafeteria FanFare

Visitors can enjoy casual foods such as Umitama udon noodles and mango soft serve. The café's decor, inspired by the sea and sun, is also popular.

The restaurant is open during 'Umitamago' opening hours.



2F Cafeteria Umitama Café Bee Honey

Enjoy a coffee break while admiring the view of Beppu Bay. The café is popular for its menu, which features honey soft serve and dishes with walrus motifs.



Floor Map

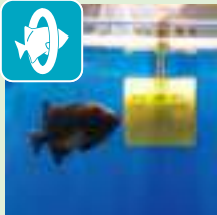
04 Mermaid Hall



Meet the Fish of the Grand Ocean Tank

This massive tank is home to fish from the Bungo Channel. In the dim glow, their graceful shapes emerge—just like in the real ocean.

08 Experiment Hall



Fish Lab

The ocean is full of wonders! Discover the fascinating lives of fish through fun experiments.

22 Performance Area



Umitama Live Shows

This was the very first aquarium space in western Japan to feature walrus and sea lion shows. Get ready to be wowed by the amazing talents of these powerful sea creatures.

12 Grand Coral Reef Tank



An Underwater Stroll Among the Coral

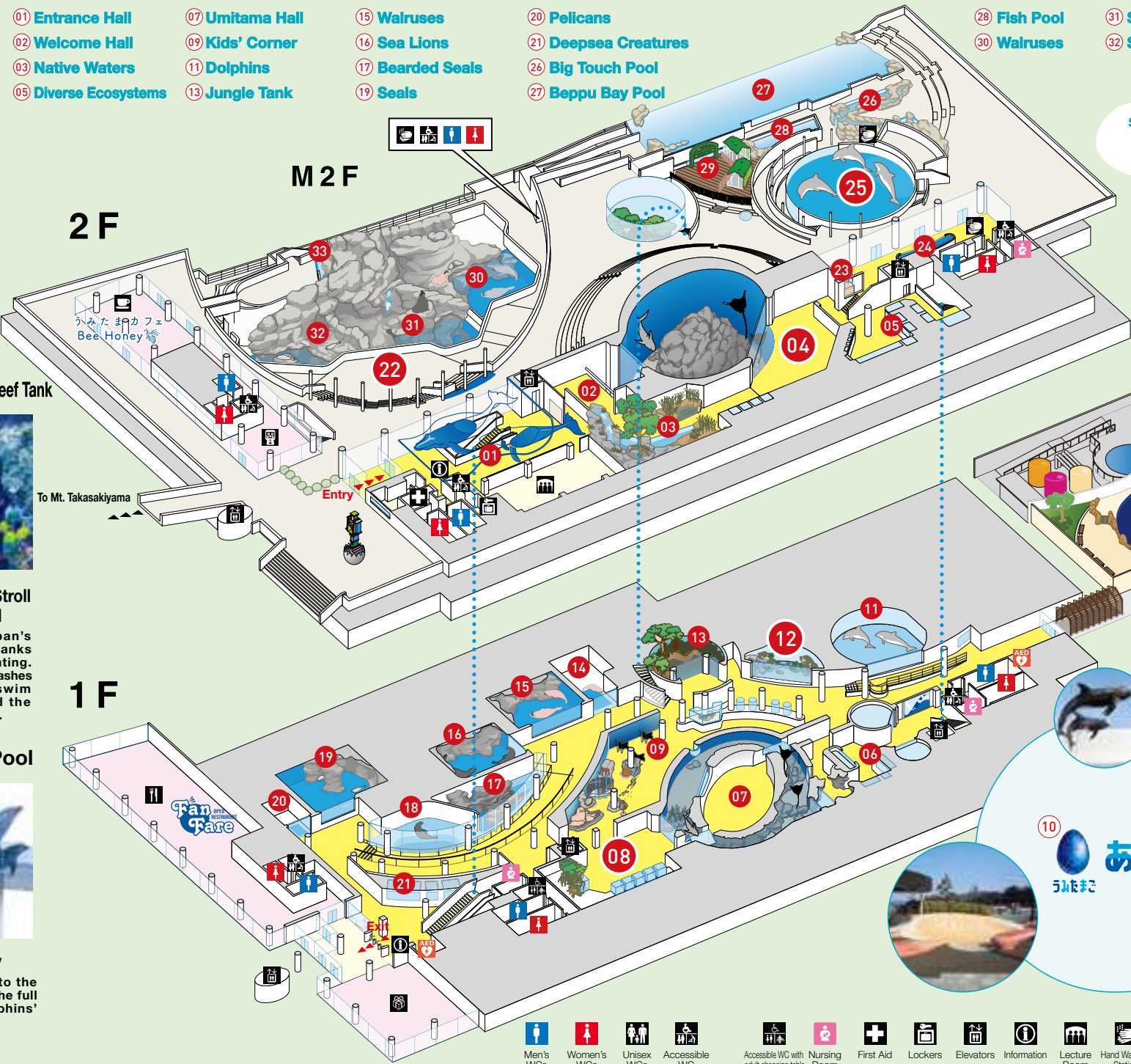
This is one of Japan's largest coral reef tanks under artificial lighting. Tropical fish add splashes of color as they swim gracefully around the gently swaying coral.

25 Dolphin Pool



Dolphin Show

With seats close to the water, you'll feel the full impact of the dolphins' spectacular jumps!



Spot this sign?
Lucky you!



06 Art Corner

Moon jellyfish and other aquatic creatures are showcased in magical displays that reveal their enigmatic beauty.



23 Sea Turtle Tank

Get an up-close look at sea turtles as they glide peacefully through the water—you might even spot one snoozing with its eyes closed!



24 Fish Touch & Watching Pool

What used to be a simple touch pool for starfish and sea cucumbers has evolved into a hands-on discovery zone, revealing the secrets of all kinds of sea life.

29 33 Asian Small-Clawed Otters

Meet our lively otter family, always on the move and full of energy. One look into those round little eyes, and your heart just might melt.



What makes Asobeach special? You get to relax and share the same space as the animals! Step barefoot into a beachside pool where dolphins swim nearby, or watch penguins and sea lions roam between different pools throughout the day.

Kids can play with colorful animal-themed play equipment at the fun-filled Asobeach zone. We've also expanded shaded rest areas and added more family-friendly facilities—like inclusive restrooms for guests with small children.

あそびーち
うみたま

- Men's WCs
- Women's WCs
- Unisex WCs
- Accessible WC
- Accessible WC with adult changing table
- Nursing Room
- First Aid
- Lockers
- Elevators
- Information
- Lecture Room
- Hand Washing Station
- Restaurant
- Cafeteria
- Shop
- Capsule Toy Corner
- AED (Automated External Defibrillator)

*Exhibits are subject to change without notice
*Our facilities are fully wheelchair accessible, in accordance with Japan's Building Access Act, ensuring a comfortable experience for all visitors.